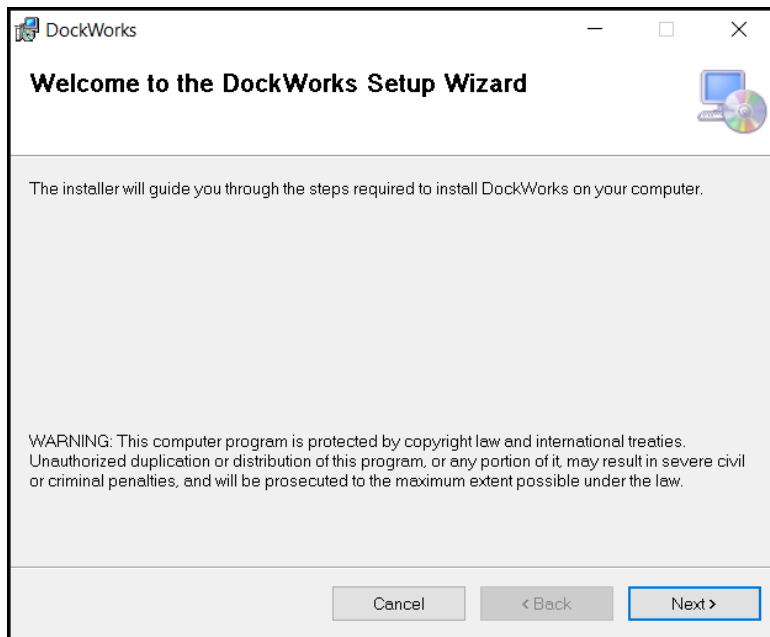
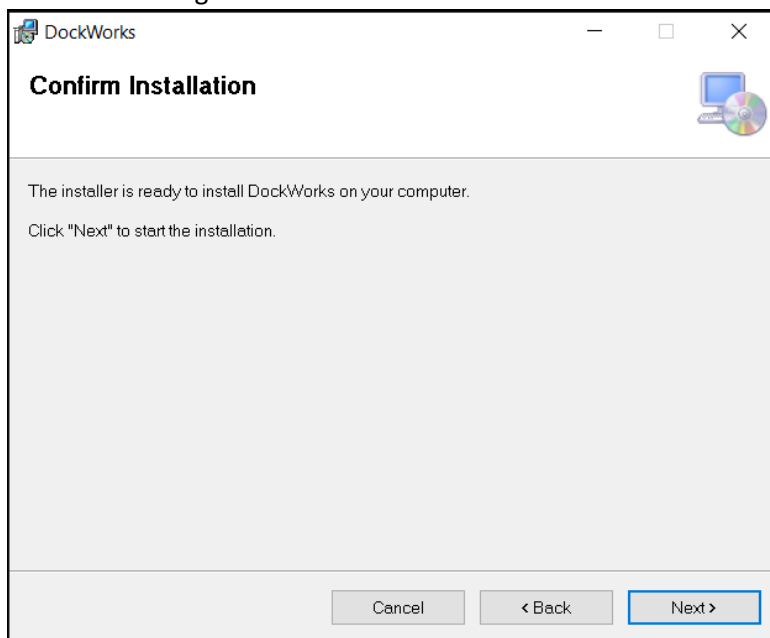


Windows installation process

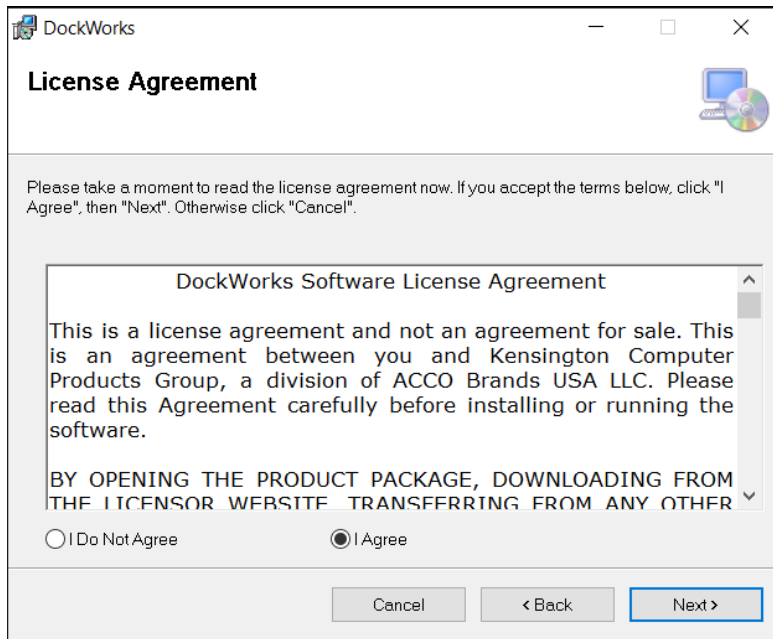
1. Download DockWorks from <https://www.kensington.com/dockworks/>.
2. Locate the file and double-click it to launch the installation process. The first snapshot is as follows, just select 'Next' to go forward.



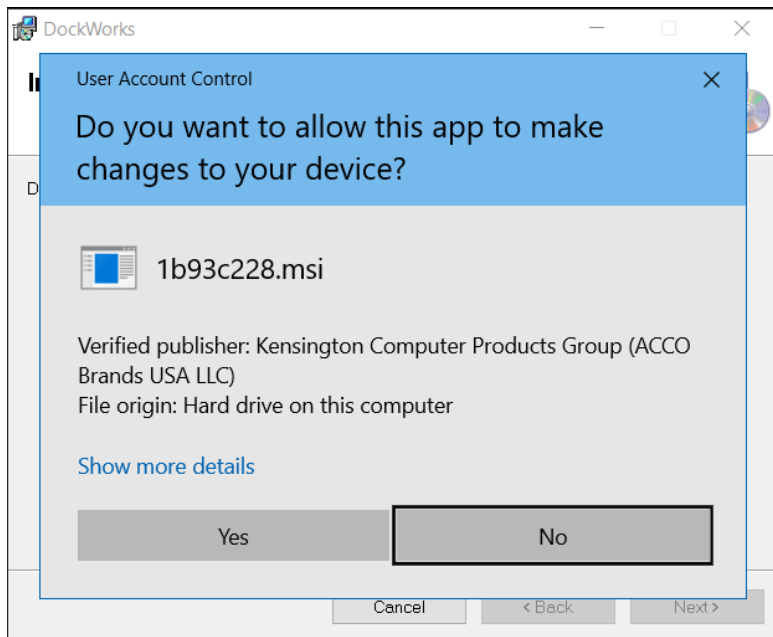
3. Select 'Next' to go forward.



4. Read and agree to the license agreement, then select 'Next'.

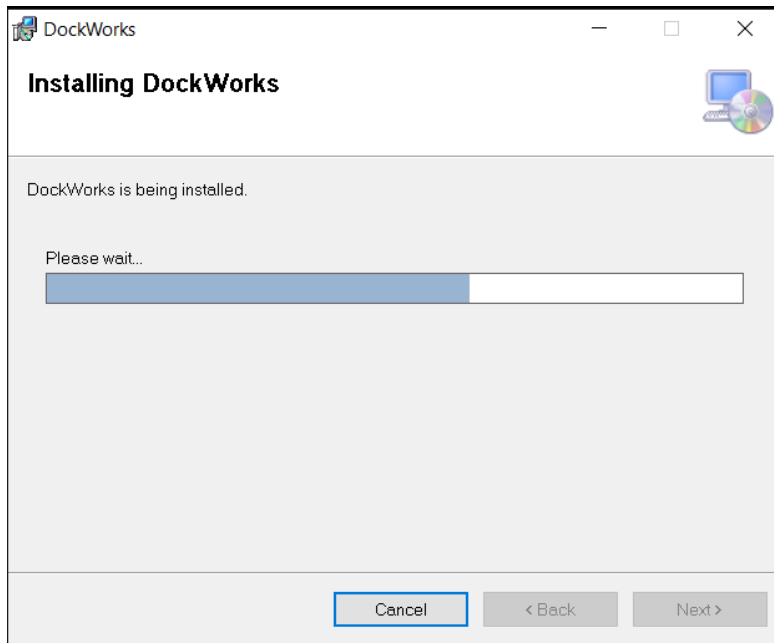


5. If prompted with 'Do you want to allow the following program to make changes to this computer?' select 'Yes'.

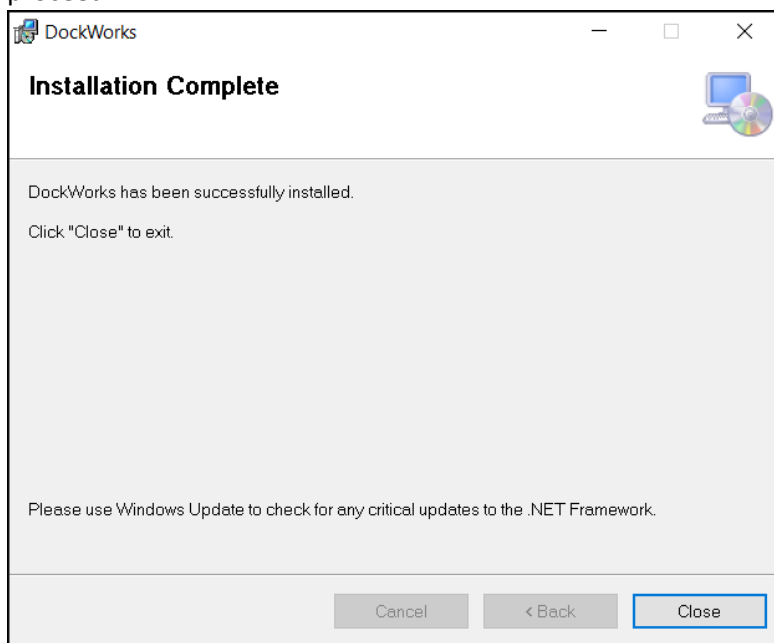


*The wording '1b93c228' is a random string generated by the system.

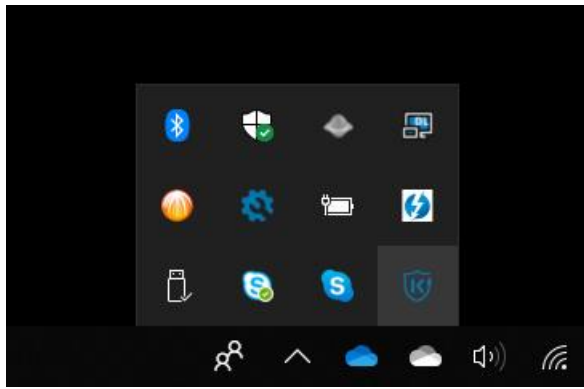
6. The installation process may take a few seconds to complete.



7. A message is provided letting you know that DockWorks has completed its installation process. Click 'Close' to proceed.

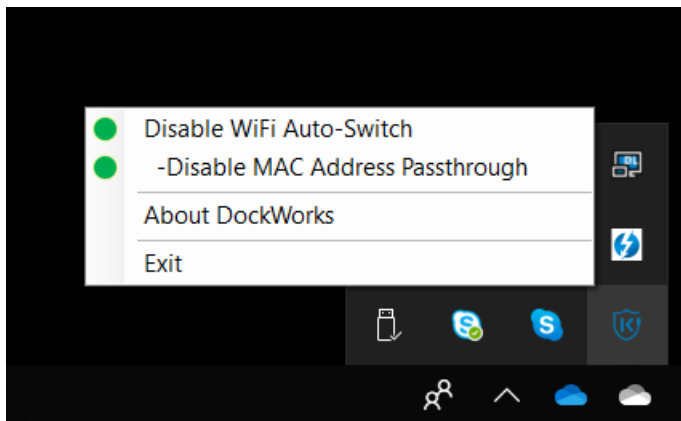


8. DockWorks is now installed on your computer and can be accessed via the Task Tray, or via Start → All Programs → Kensington → Kensington DockWorks



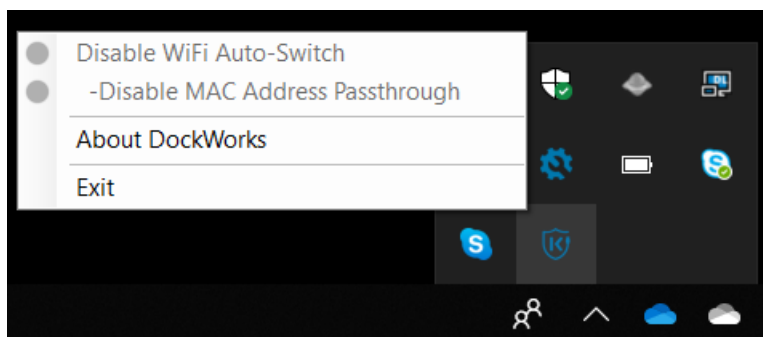
9. With DockWorks installed, you can:

- Enable (green) or Disable (red): WiFi Auto-Switch
 - WiFi Auto Switch allows the dock to prioritise LAN (Ethernet) over WiFi when you are docked. When you undock, the laptop will resume using WiFi.
Note: Switching from Ethernet to WiFi can take up to 1 min. depending on computer.
- Enable (green) or Disable (red): MAC Address Passthrough
 - MAC Address Passthrough allows the docking station to mirror the Laptop's Ethernet NIC (Network Interface Card) MAC ID.
- About DockWorks
 - Informs you of the latest version installed, as well as letting you check if a newer version is available.
- Exit
 - Allows you to close DockWorks

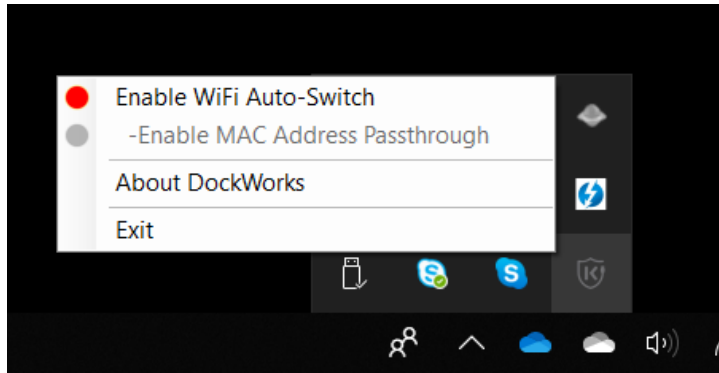


Note:

- If no Kensington docking station is connected, the WiFi Auto-Switch and MAC Address Passthrough features are locked.

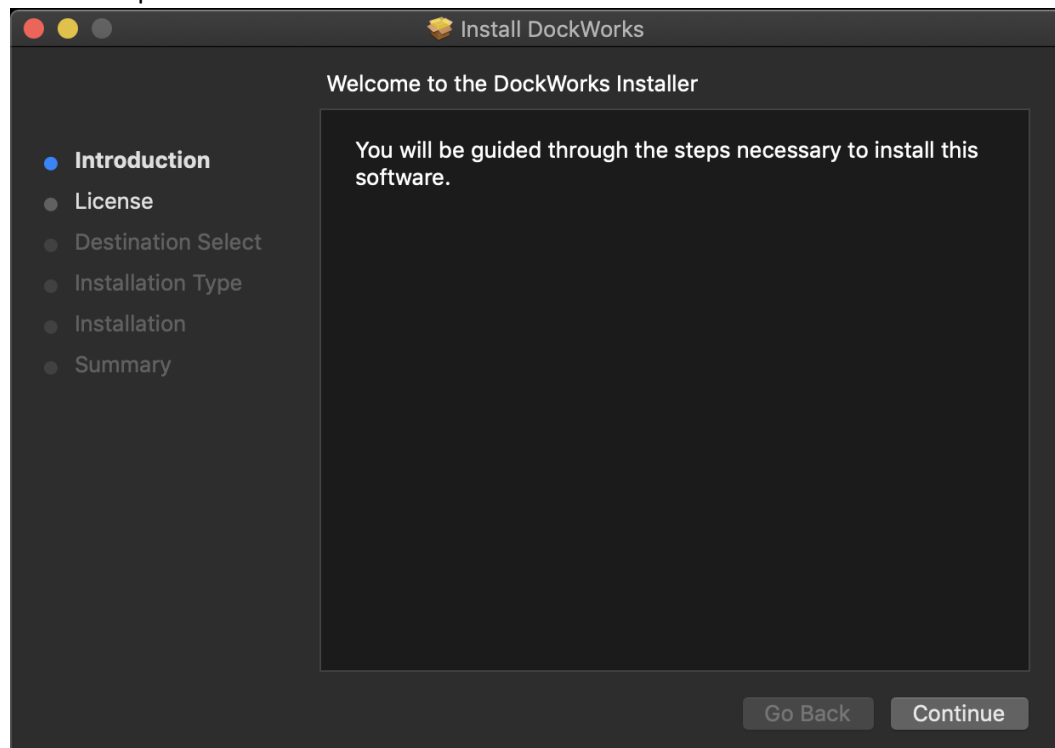


- MAC Address Passthrough is locked when the WiFi Auto-Switch is in the off status.

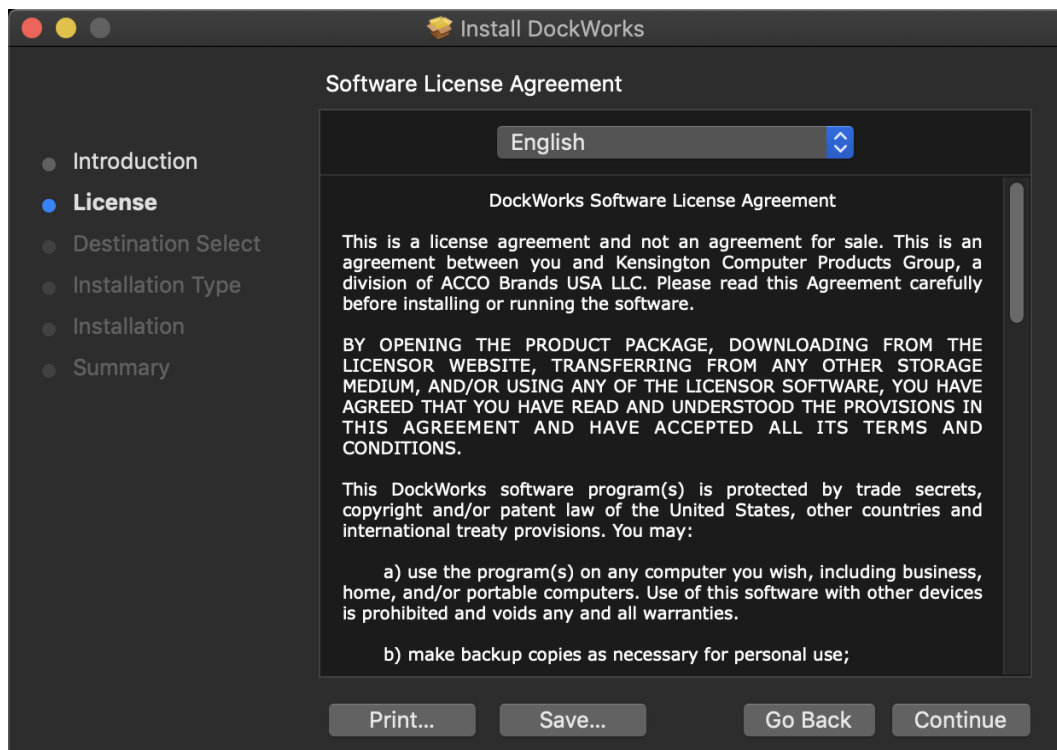


Mac installation process

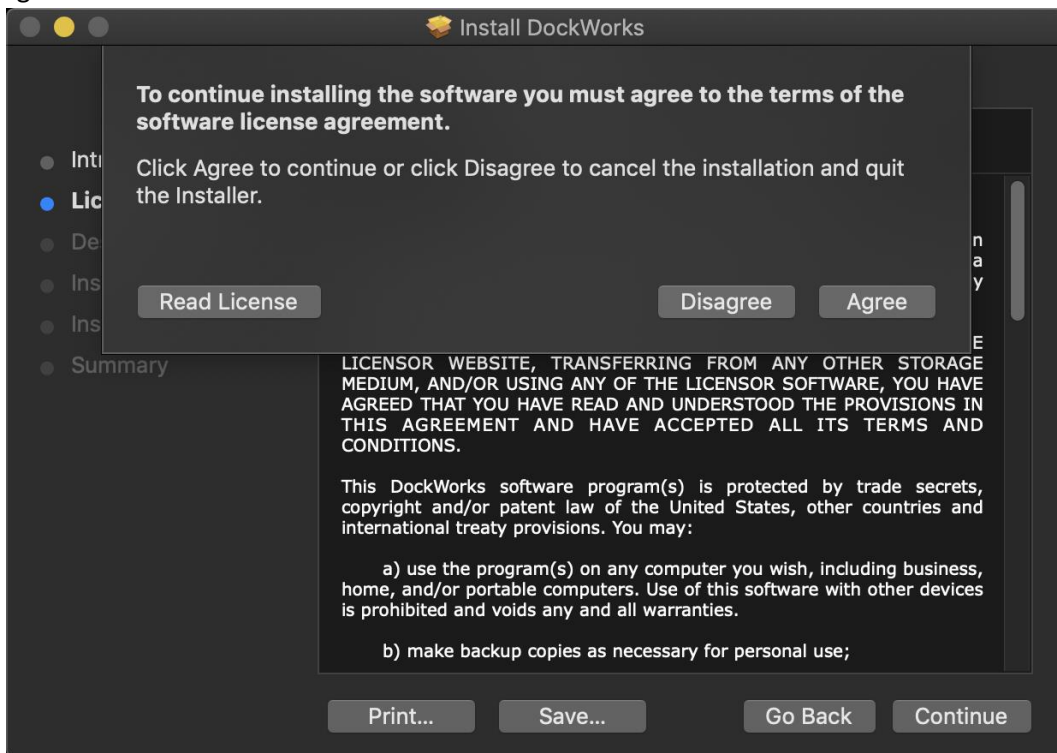
1. Download DockWorks from <https://www.kensington.com/dockworks/>.
2. Locate the file and double-click it to launch the installation process.
3. Click 'Continue' to proceed.



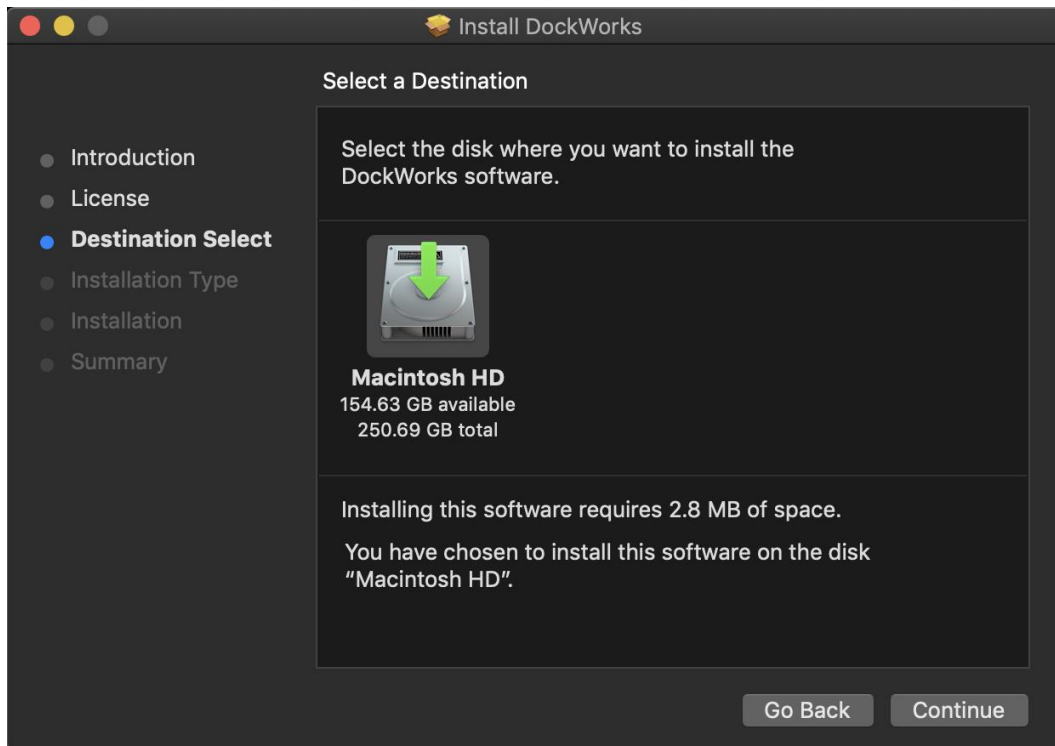
4. Review the license agreement and click 'Continue'.



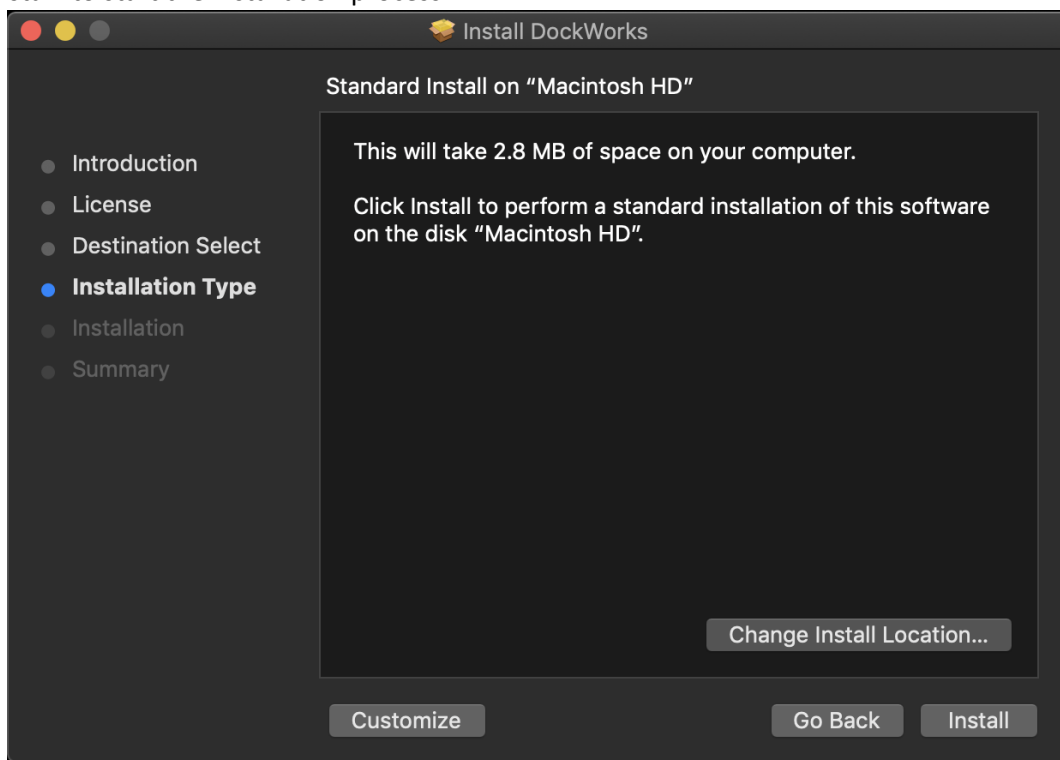
5. Select 'Agree'.



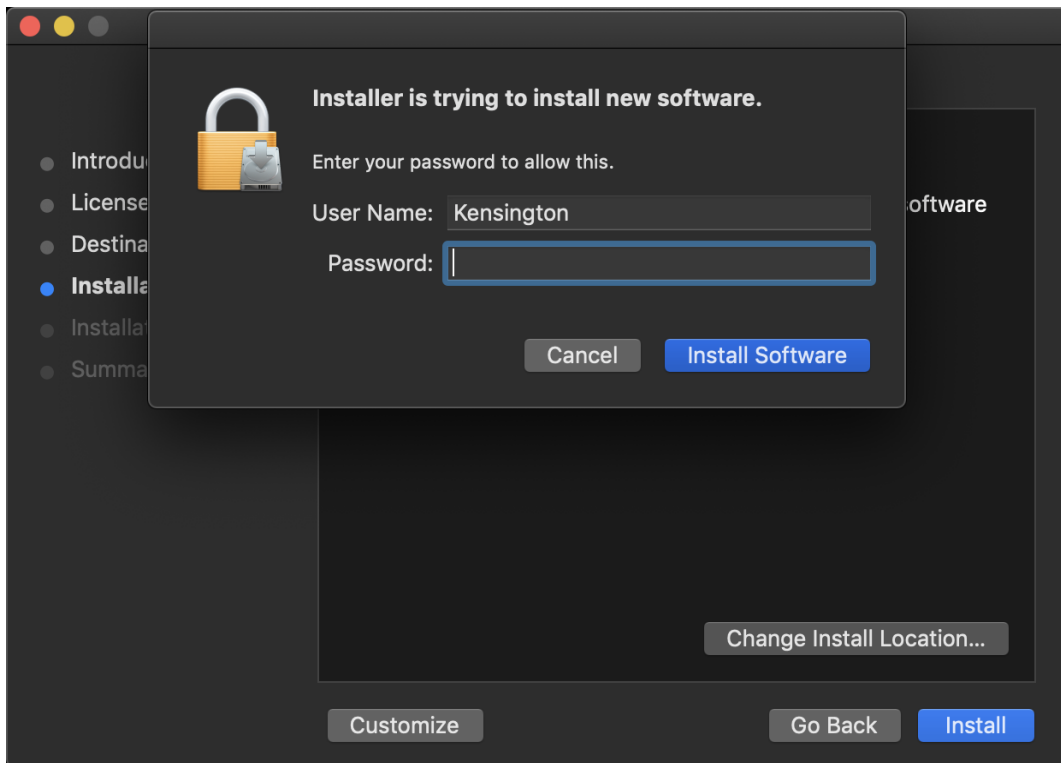
6. Select a Destination and then click 'Continue' to proceed.



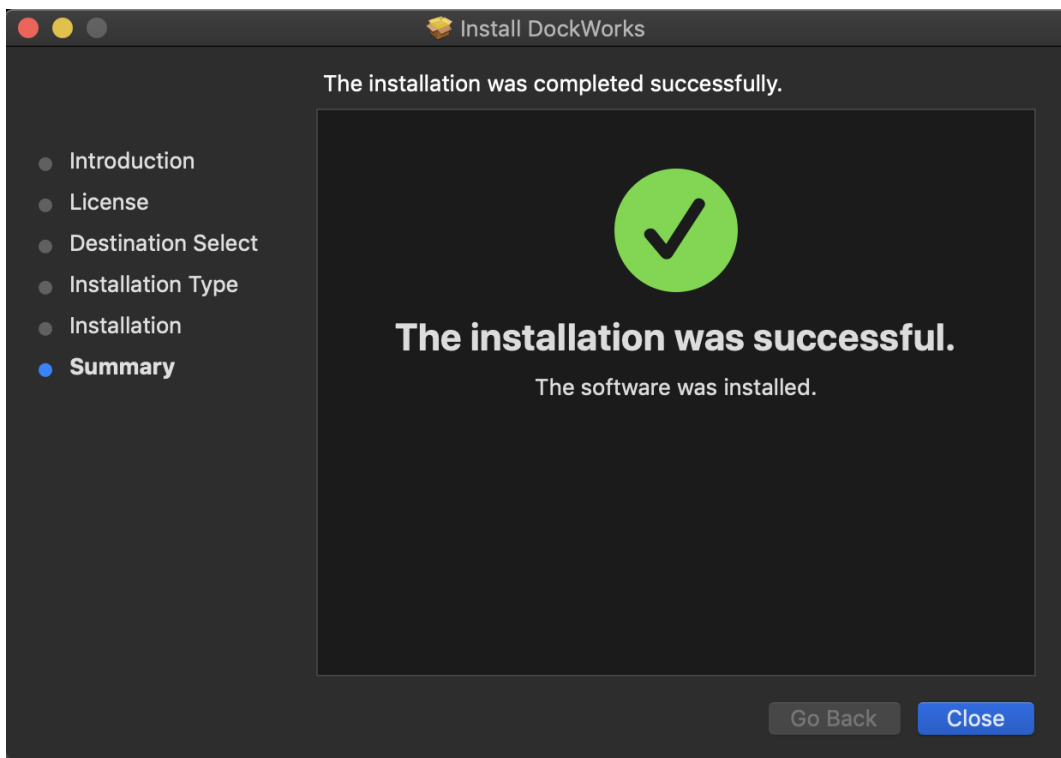
7. Click 'Install' to start the installation process.



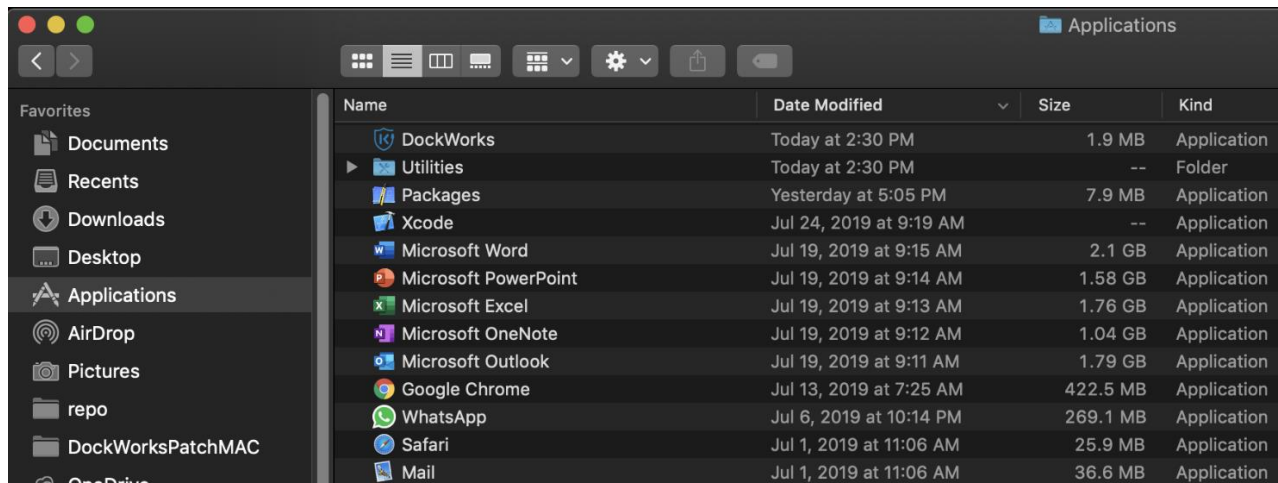
8. If prompted, input your password and click on 'Install Software'.
- The installation process may take several minutes to complete.



9. A message is provided informing you that the installation process was successful.
10. You may now click 'Close' on the installation window.

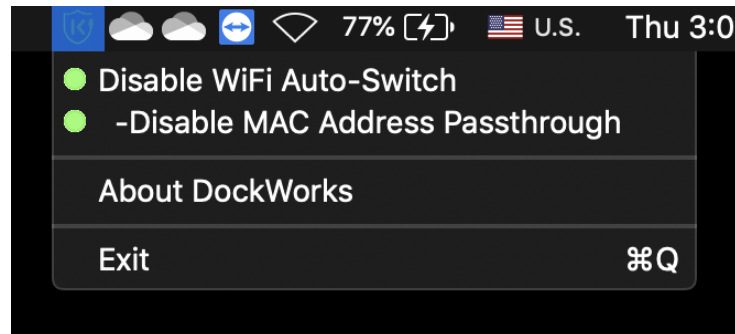


11. After the installation process completes, DockWorks will auto launch, and there will be a short cut under Applications.



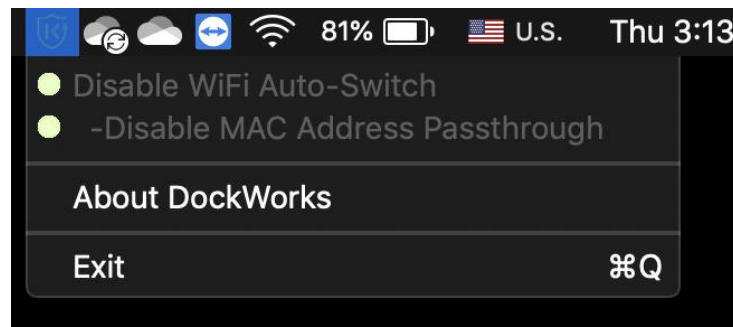
12. With DockWorks installed, you can:

- Enable (green) or Disable (red): WiFi Auto-Switch
 - WiFi Auto Switch allows the dock to prioritise LAN (Ethernet) over WiFi when you are docked. When you undock, the laptop will resume using WiFi.
- Enable (green) or Disable (red): MAC Address Passthrough
 - MAC Address Passthrough allows the docking station to mirror the Laptop's MAC ID.
- About DockWorks
 - Informs you of the latest version installed, as well as letting you check if a newer version is available.
- Exit
 - Allows you to close DockWorks

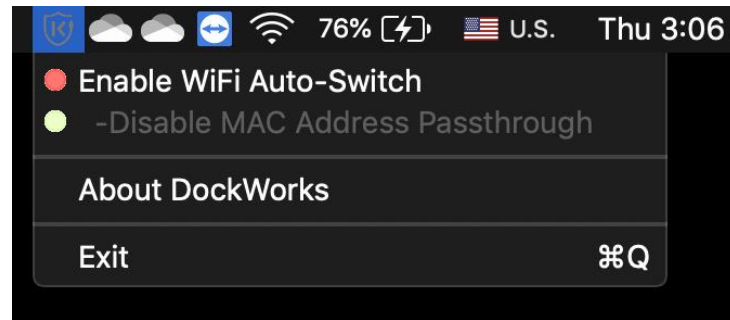


Note:

- If no Kensington docking station is connected, the WiFi Auto-Switch and MAC Address Passthrough features are locked.



- MAC Address Passthrough is locked when the WiFi Auto-Switch is in the off status.



13. For more information on DockWorks, visit <https://www.kensington.com/dockworks/>.